

Baggage Storage Service

Price

Per piece **500yen** (tax included)

①length + ②width + ③height = within 200cm

weight = within 25kg



Baggage we can keep

Traveling bag

Suit case

Hand bag

Other baggage you can carry

Note

- You can pick your baggage up the next day(after 10:00 AM) . In that case, an extra 500 yen per day is charged.
- We can not keep any baggage which has total dimension(length + width + height) of over 200 cm or over 25 kg in weight.
- We also can not keep any precision devices /equipment(PC etc.), Valuables, animal, dirty thing, smelly thing, or things that we think are not safe.
- We don't take any responsibility for damage of your baggage.
- If the baggage has not been picked up after 7 days, it will be disposed of without any notice.

OPENING HOURS

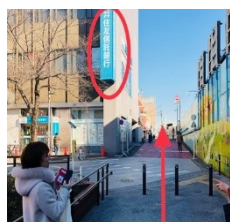
MON. - FRI. 10:00 AM - 19:00 PM

SAT. 10:00 AM - 17:00 PM

HOLIDAYS **closed**



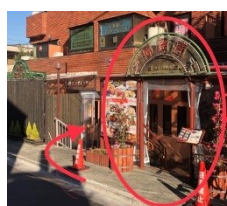
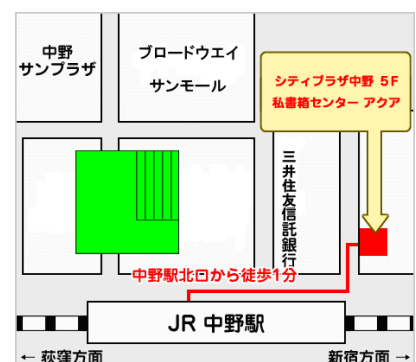
JR Nakano Station north exit



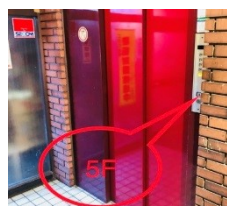
Side of the bank



It is the left in the first alley



City plaza Nakano



Elevator to 5F



AQUA is Room 504 of 5F



<https://www.aqua-post.com>

☎ 03-5380-6088

AQUA